

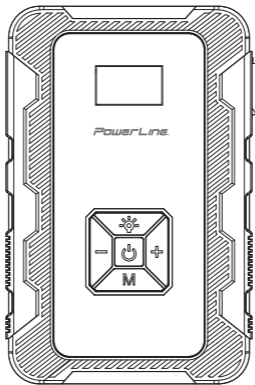
PowerLine®

Pump & Jump™ 3000

*Jump Starter with
Air Compressor*

**Battery Bank
Safety LED**

Model Number: 90901



MFPN: PL-PJ1A1CLED 3000-BG

At PowerLine® we have been committed over the past 30+ years to making the best quality products for our customers. Thank you for purchasing Pump & Jump™.

Pump & Jump™ - A Versatile Car Companion

Introducing our innovative portable car jump starter and air compressor—a must-have for every vehicle owner. Whether you're on a road trip, facing a dead battery, or need to inflate your tires, this compact device has you covered.

This all-in-one device combines practicality, convenience, and peace of mind. Whether you're a seasoned traveler or a daily commuter, our portable car jump starter and air compressor ensures you're always prepared. Don't leave home without it!

Jump Starter Feature:

Imagine being stranded in a desolate parking lot with a lifeless car battery. Our jump starter comes to the rescue. It's compatible with 12V batteries and provides the necessary jolt to revive your vehicle.

Emergency situations? No problem. Just connect the jump starter, turn the key, and watch your engine roar back to life.

Air Compressor Feature:

Low tire pressure? Uneven inflation? Our built-in air compressor handles it all. Whether you're inflating car tires, motorcycle wheels, bicycle tubes, or sports balls, this device ensures optimal pressure.

Adjust the settings, attach the nozzle, and let the compressor work its magic. Say goodbye to manual pumping!

Mobile Power Source:

Need to charge your phone, tablet, or camera on the go? Look no further. This versatile tool doubles as a mobile power bank.

Connect your mobile phone, pads, computers or other devices via USB, and keep them juiced up. It's like having a portable charging station in your glove compartment.

LED Light Functions:

Safety matters, especially during nighttime breakdowns. Our Product features LED lights with multiple modes:

- **Lighting mode:** Illuminate your surroundings when changing a tire or checking the engine.
- **SOS mode:** Signal for help if you're stranded.
- **Warning mode:** Alert other drivers to your presence on the roadside.

Pump & Jump™ products are available in varying sizes and power levels. To maximize charging performance, it is recommended that PowerLine's PowerMyne™ USB cables be used along with PowerLine's Fast Intelligent PD3.0 Charger to recharge the Pump & Jump device and devices that will use the mobile Powerbank feature. For availability and pricing of PowerMyne™ USB cables and PowerLine Fast Intelligent PD3.0 Chargers, contact an authorized retailer or view our website at powerline-usa.com.



Engine Start



Power Bank



LED Light



Air Inflation



Car Tires



Motorcycle Tires



Bicycle Tires



Ball Supplies



IMPORTANT SAFETY INSTRUCTIONS, READ FIRST.

Safety and Operating Instructions included in this manual do not cover all possible conditions and situations that may occur. The use of common sense, caution and care are factors that must be used when maintaining or operating this Product. Failure to maintain, and/or operate the Product accordingly may result in conditions which can produce bodily injury and/or property damage. Contact your dealer, service agent, or PowerLine's customer service department about any problems or conditions that you do not fully understand.

Read all instructions and WARNING prior to using the Product. Improper use of this Product may result in damage to the Product itself, damage to any accessories or devices or vehicles the Product is connected to, excess heat, toxic fumes, fire or explosion, for which damages you ("Purchaser"), and not PowerLine ("Manufacturer") are responsible.

DO NOT store this electronic Product in a high-temperature environment, including intense sunlight or other forms of heat. Do not place this electronic Product in fire or in other excessively hot environments. **Exposure to fire or temperatures above 212°F (100°C) may cause explosion. The operating temperature range for this Product is 32°F to 113°F (0°C to 45°C).**



DO NOT operate under wet conditions or expose the Product to rain or snow. This Product is not waterproof. Immersion in water will damage the Product and it should not be used after such an occurrence.



DO NOT clean this Product using water or solvent. Cleaning may only be performed when the Product is unplugged from the AC circuit with all USB cables detached. When performing cleaning use of anti-static cloths is permitted.

This Product is NOT a toy. Children should not use, play with, or clean the Product, keep out of reach of children.

DO NOT disassemble this Product or attempt to re-purpose or modify it in any manner.

DO NOT attempt to repair or replace any part of this Product. Use of a cable or accessories not recommended by PowerLine may result in a risk of fire or injury to persons.

If this Product is accessible to, or is used by, a minor (person under the age of 18), the adult owner (person over the age of 18) of the Product agrees by virtue of Product purchase to be solely responsible for providing supervision, instruction, and warnings to any minor handling or using the Product. Purchaser hereby agrees to defend, indemnify, and hold Manufacturer harmless for any claims or damages arising from unintended use, or misuse by a minor.

This Product may not be used by people with reduced physical, sensory, or mental capabilities or lack of experience and knowledge. This Product requires supervision and instruction concerning use of the Product in a safe way and understanding of the hazards involved.

Prior to shipment, this Product has undergone a thorough quality assurance inspection. Each Product is uniquely identified. If you find that your Product is not functioning properly, is excessively hot to the touch (>140-167°F (>60-75°C)), is emitting odor, is deformed, abraded, cut, or is experiencing or demonstrating any abnormal behavior, **immediately STOP all Product use** and contact PowerLine.

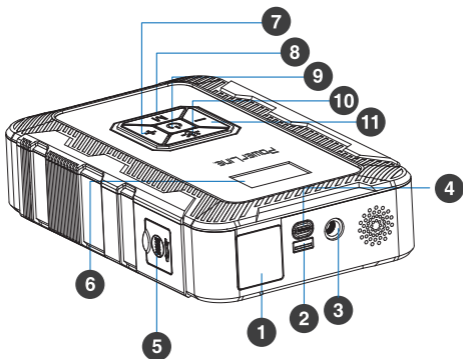
Thank you again for purchasing Pump & Jump™. If you have any questions or concerns regarding your Product, please contact us via **info@powerline-usa.com**.



Please fully read and understand this manual before using this Product. Keep this manual for future reference.

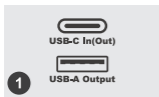
PRODUCT FUNCTIONS & BUTTONS DIAGRAM

Pump & Jump™ 3000



- | | | | |
|---|------------------------------|----|-----------------------------------|
| 1 | LED Light | 7 | Air Pressure Set " + " Button |
| 2 | USB-A 5V/9V/12V Output | 8 | " M " Button(Mode/Unit Switching) |
| 3 | Air Tube Connection Port | 9 | Power/Pump Button |
| 4 | Type-C IN/OUT port | 10 | LED Light Button |
| 5 | Jumper Cable Connection Port | 11 | Air Pressure Set " - " Button |
| 6 | Digital Air Pressure Display | | |

HOW TO CHARGE DIGITAL PRODUCTS



Plug a USB charging cable into either of the USB-A or USB-C ports.



Plug the other end of the USB cable into your device.



Press and hold the "Power" button for 2 seconds to start charging your device(s).

To avoid damage, **DO NOT** charge your digital device while using the air pump or jump starting your vehicle.

HOW TO JUMP START YOUR CAR

INSTRUCTIONS FOR JUMP STARTING

This Product can **ONLY** be used to start a 12V battery engine. **IT CANNOT BE USED TO START AN ENGINE REQUIRING A 24V BATTERY.**

ONLY USE THE SUPPLIED JUMPER CABLE ACCESSORY AND JUMPER CABLE CLAMPS when attaching the Product to your vehicle to Jump Start it.

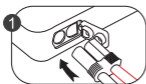
To avoid causing damage to the Product, **DO NOT USE THE PRODUCT** to start an engine when the power level of the Product is lower than 50%.

DO NOT clamp the battery clamps at both ends on working status, otherwise it may cause a safety accident.

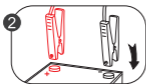
If the Product fails to start an engine, wait at least 1 minute to try again. This use will avoid damage to the Product.

After use of the Product to jump start a car, wait at least 30 minutes before charging the Product.

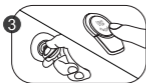
HOW TO JUMP START YOUR CAR, CON'T



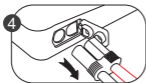
Open the rubber door, and insert the blue connector of the jumper cable into the jumper cable port.



Connect the red clamp to the positive pole (+) and the black clamp to the negative pole (-) of the car battery.



Turn on the car within 30 seconds of connecting the clamps to the car battery.



After successful startup, first pull the blue connector from the Product. Next, remove the clamps from the positive and negative terminals of the car battery.

Note: When starting the car, make sure that the power level of the Product is above 50%.

INSTRUCTIONS FOR CHARGING UP THE PUMP & JUMP PRODUCT

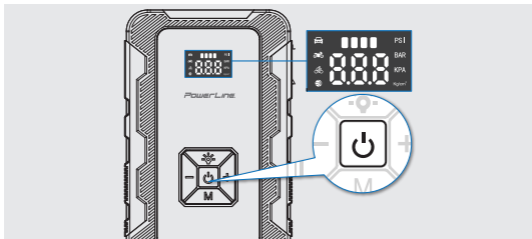


Fully charge the Product before using it for the first time.

Charging display:

When the Product is charging, the 4 grid battery indicator will keep running. When it is fully charged, the 4 grid battery indicator will stop flashing and will automatically turn off approximately 10 seconds later.

Powering On/Off



Discharge display: the screen displays the number of the current power grid " **0000** ". After powering on the Product, single press the "Power" button to switch between on/and pausing inflation.

Press and hold the "Power" button for 2 seconds to shut down the Product.

(If the Product is turned on and no operation is selected within 30 seconds, it will automatically shut down.)

INSTRUCTIONS FOR PUMPING AIR

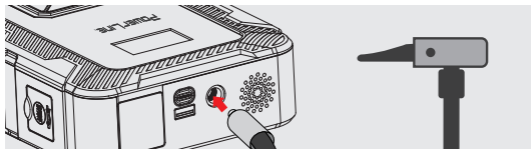
The Product has a built-in DC motor, which may generate electric sparks during operation. Do not use the Product in a flammable or explosive environment.

Before inflating any item, confirm the required air pressure required for the item being pumped up to avoid personal injury which may be caused by popping your object from over inflating.

When setting the inflation air pressure value, please make sure that the measurement unit is selected correctly. Incorrect selection of the measurement unit can lead to accidents from over inflating of items (For example, the popping of a tire). Common unit conversion: 1bar=14.5 psi, 1bar=100 kPa.

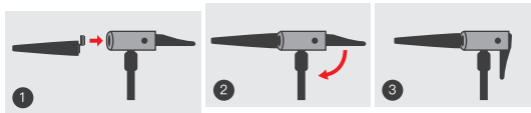
- When inflating objects, please keep this Product a safe distance away from children.
- **DO NOT** aim the nozzle at people or any part of a human body.
- **DO NOT** bend or step on the air tube when inflating, and be sure to keep the airflow unobstructed during the inflation process.
- Operators should use caution while inflating an object and should not leave the scene during inflation. Closely monitor the inflation process to prevent the air pressure within the object from becoming too high, which could be caused by the maximum air pressure setting not being set appropriately by the user on the Product prior to inflation.

Connecting the Air Tube

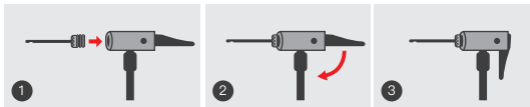


Tires on bicycles, motorcycles, and cars are usually connected directly to the Product using the enclosed locking head at the end of the air tube.

Air Nozzle / Air Needle Mounting Method



When inflating items such as air mattresses or blow-up beds, or inflatable swimming rings, select the appropriate air nozzle and insert the nozzle into the locking head of the air tube before starting to inflate such items.



When inflating items such as a basketballs, footballs or other balls, use an air needle and insert the needle into the locking head of the air tube before starting to inflate such items.

Inflation Air Pressure

To ensure safety, before using the Product for inflating an object, please understand the appropriate air pressure (PSI value) required and/or the maximum air pressure of the item to be inflated (check the surface printing information of the inflated item, or refer to the instruction manual of the inflated item). This step will help to avoid personal injury caused by over-pressure inflation of objects.

Common Items Recommended Inflatable Air Pressure

Category	Types	Recommended air pressure range
Cars	Car tires	32-40 psi (2.2-2.8 Bar)
Motorcycles	Motorcycle tires	26-44 psi (1.8-3.0 Bar)
Bikes	Folding bicycle tires 12"14"16"bicycle tires 20"22"24"bicycle tires 26"27.5"29"bicycle tires 700c road bike open tire 700c road bike tube tire	45-50 psi 30-50 psi 40-50 psi 45-65 psi 90-130 psi 90-145 psi
Balls	Basketball Football Volleyball Rugby ball	7-9 psi 8-16 psi 4-5 psi 12-14 psi

Note:

The above data is based on lab testing and is only a recommended air pressure range for reference only. Please refer to the instruction manual of the item you are inflating for actual air pressure specifications.

HOW TO PRESET INFLATION AIR PRESSURE

Mode Selection

Short press the "M" button to select the inflation mode: each time you press this button, you can switch between the five inflation modes of "car", "motorcycle", "bicycle", "ball" and "Freedom Mode", (Long press this key to switch between PSI, BAR, KPA, Kg/cm2 four air pressure units.)

**Car mode:**

Default 36 psi (Adjustable range 26-50 psi)

**Motorcycle mode:**

Default 35 psi (Adjustable range 26-50 psi)

**Bicycle mode:**

Default 45 psi (Adjustable range 30-160 psi)

**Ball mode:**

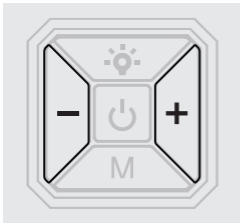
Default 8 psi (Adjustable range 4-16 psi)

Freedom Mode:

Lights up without any mode: The factory default preset pressure value is 35 psi, the preset pressure can be adjusted freely before operation(values can be memorized)Adjustable range: 3-160 psi

After selecting the appropriate inflation mode for your object, the screen will display the default setting value and flash three times (at the rate of once per second). The Product then enters the air pressure detection mode to detect and determine the current air pressure of the item you intend to inflate. NOTE: When there is no item attached to the air nozzle, the air pressure value will display "0".

Air Compressor Preset Adjustments

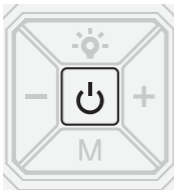


After selecting the inflation mode, press the "+" key or "-" key with short presses to adjust the preset air pressure value; to more quickly adjust the air pressure value you can hold the "+" key or "-" down for a longer period. After you are satisfied and finished pressing the keys to set your pre-set value, the final air pressure value selected will flash three times (for 3 seconds) and then the setting is locked in and automatically confirmed.

CAUTION:

- When adjusting the preset air pressure value, the number flashes to indicate the target air pressure adjustment status. The non flashing number displayed always indicates the real-time air pressure of the object.
- The default value will be restored after the mode is switched or restarted.
- When inflating a swimming ring or air bed, use the "Ball mode".

Inflation Instructions



To turn on inflation: After the air pressure setting is completed, short press the "Power" button to start inflation, and the screen will display real-time air pressure changes within the object during the inflation process.

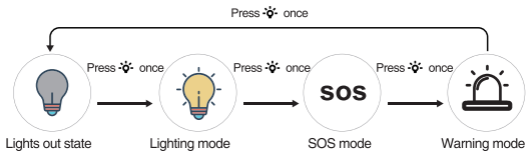
To Stop inflation: When the air pressure reaches the preset value, the air pump will automatically stop inflating. During the inflation process, you can also pause the inflation by short pressing the "Power" button.

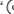
To Shut down: In the power-on state, press and hold the "Power" button for 2 seconds to shut down the air compressor.

SPECIAL REMINDERS

- 75-80 dB of noise will be generated during inflation.
- There may be occasions where the inflation air pressure required for balloons, toy balls, swimming rings and other such products is less than the range of the air pump. In such cases the inflation pressure may not automatically stop at a user programmed preset air pressure point. **TAKE CAUTION IN SUCH CASES AND BE CAREFUL WHEN USING THE PRODUCT.**
- When the air compressor in the Product continues to work for a long period, the temperature of the Product's body and the air tube will rise significantly. Avoid touching the air tube with your bare hands. If the Product's body or tube temperature is hot, allow the Product to cool down before continuing use. **BE CAREFUL OF HOT SURFACES THAT MAY CAUSE BURNS WHEN REMOVING THE AIR HOSE OR NOZZLE AFTER USE.** There will be slight air leakage when disengaging the air tube from the body of the Product. **TAKE CAUTION AND BE CAREFUL WHEN REMOVING THE AIR TUBE.**
- Using the Product with higher than rated air pressure loads, and/or air pumping in lower ambient temperatures, may cause the Product to degrade its useful life.
- The Product's air pump generates a large amount of heat. After a period of 10 minutes of continuous use, please allow the Product to cool down and rest for 10 minutes before using it again.

HOW TO USE LIGHT



Long press “” for 2 seconds in any mode to turn off the LED lamp function.

BASIC SPECIFICATIONS

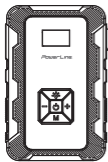
Product Name	PUMP & JUMP™ 3000
Model Number	90901
Manufacturer Part Number	PL-PJ1A1CLED 3000-BG
Size	8.7 x 5.6 x 2.2 inches (220x143x53mm)
Weight	2.81 LBS (1.27kg)
Air pressure range	3~160 psi (0.2~11 bar)
Air Pressure Sensor Accuracy	±1 psi
Operating Temperature	Charge: 32°F~122°F (0°C to 50°C), Discharge: 14°F~122°F (-10°C to 50°C)
Storage Temperature	14°F~140°F (-10°C to 60°C)
Inflatable Tube Length	17.1 inches (Including air nozzle)
Battery Capacity	20000 mAh (74 Wh)
Noise Level	Less than 80 dB at 40 inch distance
USB-C In/Out	5V/3A, 9V/3A, 12V/3A, 15V/3A, 20V/2.25A (45W PD3.0)
Charging Time (average)	About 2 hours
USB-A Output	5V/3A, 9V/2A, 12V/1.5A (QC 3.0)
Supports Vehicle Batteries	12V
Cranking Power for startup	1500A (3000A Peak)

PRECAUTIONS

USAGE NOTICE

- This Product is **NOT** a toy; children under the age of 18 should not use the Product. This product contains small accessories which are a choking hazard to children. Keep out of reach of children.
- When in use, disconnect the Product from all power sources.
- Before first use, charge the Product for at least 3 hours.
- Please practice electrical safety while using this Product.
- **DO NOT** use the Product for unintended purposes.
- **DO NOT** use this Product near flammable liquids or gasses, or conosive gases, or strong magnetic fields.
- This Product has a built-in, non-removable lithium battery. You may **NOT** throw this Product into a fire or throw it away. After useful life, properly dispose of the Product according to local regulations regarding E-waste. The lithium battery may catch fire, spontaneously ignite and explode due to overheating, impact or water.
- **DO NOT** expose the Product to sun in or outside a vehicle, or expose it to high temperature environment. Such exposure is dangerous and could cause injury, damage or harm to persons on property.
- Ensure the Product is intact before use. **DO NOT** use if damaged.
- If the Product is swollen, leaking or smells abnormally, **STOP** using it immediately.
- If the Product produces an abnormal noise or has a hot temperature during use, **STOP** using it and shut it down immediately.
- Store or use in a dry and clean environment. Avoid dampness, heavy falls, water immersion and sand intrusion. The intrusion of sand and dust may cause damage to the Product; this Product is **NOT** waterproof and can **NOT** be washed in water.
- Keep Product away from corrosive materials when storing this Product, and the storage temperature should not be lower than 14°F (-10°C) or higher than 122°F (50°C). Extreme cold and heat will shorten the life of the Product and damage the built-in battery.
- For optimal use, keep this Product charged at least once every 3 months.
- **DO NOT** attempt to disassemble the Product at all.

PACKAGE CONTENTS



Product x1



Air tube x1



Guide x1



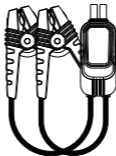
Storage bag x1



Air needle x1



Air nozzle x2



Jumper cable x1



Charging cable x1

If the attachments are missing or damaged after the packaged product is received, please contact us.

Note: The illustrations of Product, accessories, and display interfaces in this manual are all schematic diagrams and are for reference only. Since the Product may be upgraded from time to time, the actual Product and the diagrams may be different.

TROUBLE SHOOTING

Problem	Elimination Method
Slow inflation	Check whether the battery is sufficiently powered. Check for air leaks in the air hose. Check whether the connecting parts at both ends of the air hose are tightly installed. Check whether the tires are flat.
Product has been turned on, but cannot inflate	Check whether the battery is sufficiently powered. Check whether the air pressure of the inflated item is higher than the preset value.
The inflation is normal, but the displayed pressure value is zero	Low-pressure inflated objects such as balloons are not within the measurable range of this device.
After installing the air nozzle tightly, the power automatically turns off	The Product will automatically shut down if there is no operation within 30 seconds. Restart the Product.
There is air leakage when connecting the air hose to the body of the Product	Re-install the air hose tightly, or the tube may be punctured.

DISCLAIMER

1. PowerLine[®] and its brand owner, or manufacturer do not assume any responsibility for problems caused by mis-operation or misuse of the Product outside of the instructions contained herein.
2. If the Product is damaged by use, disassembly and reassembly, PowerLine will not bear any responsibility.
3. If the use of a mismatched AC/DC charger causes problems, PowerLine does not assume any responsibility.
4. PowerLine does not assume any responsibility for Products beyond the expressed warranty period.

SAVE THE FOLLOWING INSTRUCTIONS

FCC Statement

This Product complies with Part 15 of the FCC rules. Operation is subject to the following two conditions:

1) This Product may not cause harmful interference, and (2) this Product must accept any interference received, including interference that may cause undesired operation.

Warning: Changes or modifications not expressly approved by the party responsible for compliance could void the user's authority to operate the equipment.

Note: This equipment has been tested and found to comply with the limits for a class B digital Product, pursuant to Part 15 of the FCC rules. These limits are designed to provide reasonable protection against harmful interference in a residential installation.

This equipment generates, uses, and can radiate radio frequency energy and, if not installed and used in accordance with the instructions, may cause harmful interference to radio communications. However, there is no guarantee that interference will not occur in a particular installation.

If this equipment does cause harmful interference to radio or television reception, which can be determined by turning the equipment off and on, the user is encouraged to try to correct the interference by one or more of the following measures:

- 1) Reorient or relocate the receiving antenna.
- 2) Increase the separation between the equipment and receiver.
- 3) Connect the equipment into an outlet on a circuit different from that to which the receiver is connected.
- 4) Consult the dealer or an experienced radio/TV technician for help.

CAUTION

To comply with the limits of the Class B digital Product, pursuant to Part 15 of the FCC Rules, this Product must be used with certified peripherals and shielded cables. All peripherals must be shielded and grounded. Operation with non-certified peripherals or non-shielded cable may result in interference to radio or reception.

This equipment complies with FCC radiation exposure limits set forth for an uncontrolled environment. This equipment should be installed and operated with a minimum distance of 20cm (approximately 8 inches) between the Product and your body.

Any changes or modifications not expressly approved by the party responsible for compliance could void the user's authority to operate the equipment.

The following importer is the responsible party (for FCC matters only).
Company Name: PowerLine, 1 Civic Center Drive, Ste 210, San Marcos, CA 92069, USA. Telephone: + 1-800-732-9810.

Industry Canada (IC) Statement

This Product complies with Industry Canada license-ICES-003 (B). Operation is subject to the following two conditions:

(1) This Product may not cause interference, and (2) This Product must accept any interference, including interference that may cause undesired operation of the Product.

Le présent appareil est conforme aux CNR d'Industrie Canada applicables aux appareils radio exempts de licence. L'exploitation est autorisée aux deux conditions suivantes:(1). l'appareil ne doit pas produire de brouillage, et (2) l'utilisateur de l'appareil doit accepter tout brouillage radioélectrique subi, même si le brouillage est susceptible d'en compromettre le fonctionnement.
Industry Canada Statement: This digital apparatus complies with CAN ICES-003(B)/NMB-003(B).

EU CE EMC compliance Statement

This Product complies with EN55032: 2015+A1: 2020 and EN61000-3-2: 2019+A1: 2021 and EN55035: 2017+A11:2020.

SAFETY COMPLIANCES

This Product complies with UL2743. To obtain a report please submit a request to PowerLine-USA.com.

ENVIRONMENTAL COMPLIANCES

Over the past fifteen years, the world has experienced major changes when it comes to quality and compliance standards for materials and Production. Globally, consumers and manufacturers have gained a better understanding of how hazardous certain industrial chemicals can be. A greater appreciation for socially responsible Production methods to comply with global standards is our goal.

RoHS DECLARATION OF CONFORMITY

RoHS (EU Directive 2002/95/EC) is a set of EU regulations that restrict the use of hazardous substances in electrical and electronic equipment. This directive bans placing on the EU market any Product having an electrical/electronic component containing more than thresholds set for certain substances. PowerLine hereby declares that this Product is in compliance with RoHS (EU Directive 2011/65/EU, 2015/836/EU and IEC 62321-3-1:2013; IEC 62321-4:2013+AMD1:2017; IEC 62321-5:2013; IEC 62321-7-1:2015; IEC 62321-7-2:2017; IEC 62321-6:2015; IEC 62321-8:2017).

REACH DECLARATION OF CONFORMITY

Registration, Evaluation, Authorization and Restriction of Chemicals (REACH) is one of the most comprehensive pieces of environmental legislation to come out of the European Union. It pertains to EU-based manufacturers and importers, requiring them to register chemicals that are manufactured or found existing in their products with the European Chemicals Agency (ECHA). This applies to all chemical substances that exceed one metric ton/year on a per substance per manufacturer basis. PowerLine hereby declares that this Product is in compliance with RoHS (EU Directive 2011/65/EU, 2015/836/EU).

WEEE DECLARATION



This Product is marked with the WEEE symbol; this indicates that this Product should **NOT** be treated as household waste and must NOT be disposed of with other waste. Instead, it is the user's responsibility to dispose of their electrical and electronic equipment waste by returning the Product to an authorized re-processor at an applicable collection point for its recycling, or by returning it postage paid to PowerLine for reprocessing. For more information about where you can send your waste equipment for recycling, please contact PowerLine, or one of your local distributors.

WARRANTY

PowerLine warrants this Product to the original purchaser to be free of defects in materials and workmanship for one year after the original date of consumer purchase. This warranty does not include damage caused by accident or misuse. Proof of purchase is required to validate your warranty if a claim is made.

Manufacturer will not in any way be liable to you, or to any third party, for any damages you, or any third party, may suffer as a result of use, intended or unintended, or misuse of this product in conjunction with any other object, items, product or accessory other than the appropriate Products for which this Product is designed.

Manufacturer will not be responsible for any damages you, or any third party, may suffer because of misuse of this Product or connected products or products as outlined above. Purchaser agrees to defend, indemnify, and hold Manufacturer harmless for any claims or damages arising from unintended use or misuse, including use with an unintended accessory or product.

IN NO EVENT SHALL POWERLINE BE LIABLE FOR INCIDENTAL OR CONSEQUENTIAL DAMAGES.

Some states do not allow exclusion or limitation of incidental or consequential damages, so the above exclusion may not apply to you. This warranty gives you specific legal rights, and you may have other statutory rights that vary from state to state.

If PowerLine, in its sole discretion, determines that the Product has become defective within the warranty period, we will repair or replace it free of charge at our option.

This warranty does not affect any statutory rights that you may be entitled to. Please keep a copy of your purchase receipt as proof of purchase.

For full details regarding our warranty terms, exclusions and limitations, please visit our website at:

www.powerline-usa.com/Product-warranty/

Customer Service

www.powerline-usa.com/support/ or call 1-800-732-9810.

REGISTER YOUR PRODUCT BY SCANNING THE BELOW QR CODE AND RECEIVE ACCESS TO A DIGITAL MANUAL, AND FUTURE DISCOUNTS ON OTHER POWERLINE PRODUCTS.



SCAN TO REGISTER FOR
WARRANTY, OPERATING MANUAL
& FUTURE DISCOUNTS

PowerLine®

PowerLine
San Marcos, CA 92069 USA
www.powerline-usa.com



www.instagram.com/powerline_lifestyle/



www.facebook.com/PowerLine.Lifestyle/



www.linkedin.com/company/powerline-usa

PowerLine® is a registered trademark of PowerLine and Group Intellect Power Technology, Limited. USB-C is a registered trademark of USB Implementers Forum, Inc. All other trademarks are the marks of their respective owners.

© PowerLine, 2024

Manual Part number: 500.006.001.182100